

Type \_\_\_\_\_  
 Project \_\_\_\_\_  
 Comments \_\_\_\_\_  
 Prepared By \_\_\_\_\_

## G2 High Output Linear Accent

High performance cove, graze and wash applications

Tunable spectrum single point source produces wide range of white, pastels & saturated colors

Closed-loop color point maintenance to <1 MacAdam ellipse over lifetime and temperature

Programmable digital dimming to 0.1%

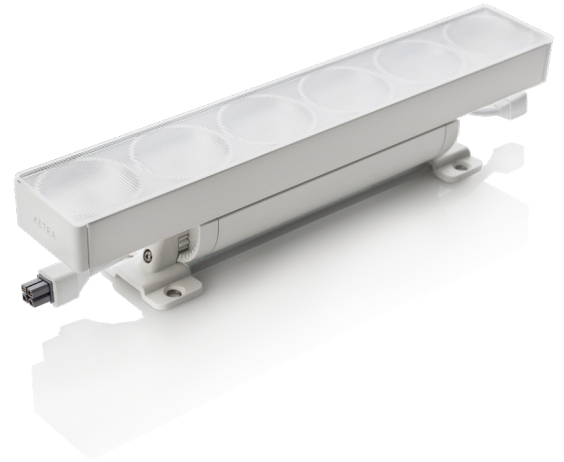
Connects with Ketra's N3 Satellite for power, wireless control and connection to Ketra's library of light content

Ketra's technology ensures consistent appearance and guaranteed compatibility over LED technology generations

Integrated on-board power supply does not require remote transformer

Infinitely adjustable, 180° rotation, constant torque hinge does not require locking but includes optional locking screw

Excellent near-field color mixing



### ORDERING GUIDE

Product Line	<b>G2</b> Model	<b>12</b> Length	Lumens	<b>BT</b> Platform/ Control	Beam Angle	Region/ Voltage	<b>A</b> Interface	<b>WH</b> Housing Color
--------------	--------------------	---------------------	--------	-----------------------------------	------------	--------------------	-----------------------	----------------------------

Order code: \_\_\_\_\_

Product Line	Code	Platform/ Control	Code	Region/ Voltage	Code
Commercial	<b>CM-</b>	(see page 6 color chart)		North America, 120VAC 60Hz	<b>11</b>
Residential (Homeworks compatible)	<b>HW-</b>	Wide Gamut, Tunable	<b>BT</b>	North America, 277VAC 60Hz	<b>12</b>
<b>Model</b>		<b>Beam Angle</b>		<b>Interface</b>	
G Series 12" Linear Accent	<b>G2</b>	Graze (10 X 60°)	<b>GR</b>	Leader Cable	<b>A</b>
		Narrow Flood (30 X 45°)	<b>NFL</b>	<b>Housing Color</b>	
		Flood (60 X 60°)	<b>FL</b>	White	<b>WH</b>
<b>Length</b>		Wide Flood (120 X 120°)	<b>WFL</b>		
1 foot (12 inch)	<b>12</b>				
<b>Lumens</b>					
1000	<b>10</b>				
700	<b>07</b>				
400	<b>04</b>				



## G2 HIGH OUTPUT LINEAR ACCENT

### SPECIFICATIONS<sup>1</sup>

#### Optical Performance

Lumen Output <sup>2</sup>	<b>G2.10 1000lm/ft, G2.07 700lm/ft, G2.04 400lm/ft</b>
CRI (Ra) <sup>3</sup>	<b>&gt;90</b>
Lumen Maintenance <sup>3</sup>	<b>50,000 hours to L70 @ 25°C Ambient</b>
Color Spatial Uniformity	<b>&lt;2 MacAdam ellipses across field angle</b>
Color Point Maintenance <sup>3</sup>	<b>&lt;1 MacAdam ellipse over product lifetime</b>
Beam Angles	<b>10×60° 30×45° 60×60° 120×120°</b>
Dimming Range <sup>1</sup>	<b>0.1-100% lm</b>

#### Environmental

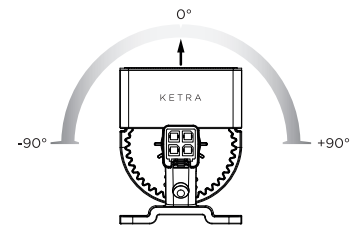
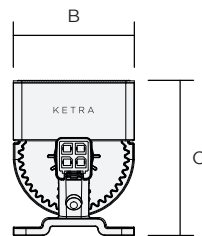
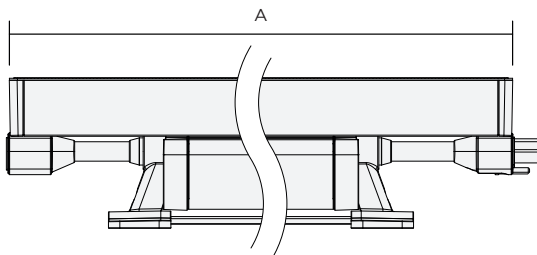
Ambient Operating Temperature	<b>-20 - 50°C</b>
Storage Temperature	<b>-20 - 80°C</b>
Humidity	<b>0 - 95%, Non-condensing</b>
Certification	<b>UL, cUL, RoHS</b>
Location	<b>UL Damp Location, IP20</b>

#### Form Factor

##### Dimensions:

Beam Angle	Dim A	Dim B	Dim C
Wide Flood	<b>12", 305 mm</b>	<b>2", 50.8 mm</b>	<b>2.5", 63.5 mm</b>
Flood			<b>2.5", 63.5 mm</b>
Narrow Flood			<b>2.65", 67 mm</b>
Graze			<b>3.1", 78.7 mm</b>

Rotation **Infinite adjustment through 180°**



#### Mechanical

Weight (12")	<b>1.35 lbs, 600 g</b>
Housing Material	<b>Powder Coated Aluminum, Polymer</b>
Lens Material	<b>Non-yellowing heat/UV stabilized PMMA</b>

#### Optical & Electrical Performance

Power Consumption	120V	277V
	<b>G2.10 17W/ft TYP, G2.07 11.5W/ft TYP, G2.04 8W/ft TYP</b>	<b>G2.10 15.5W/ft TYP, G2.07 11W/ft TYP, G2.04 7.7W/ft TYP</b>
Power Factor	<b>&gt;0.9</b>	<b>&gt;0.9</b>
Current	120V	277V
	<b>G2.10 0.14 A G2.07 0.10 A G2.04 0.07 A</b>	<b>G2.10 0.06 A G2.07 0.04 A G2.04 0.03 A</b>
Efficacy	120V	277V
	<b>G2.10 58.8lm/W TYP, G2.07 60.9lm/W TYP, G2.04 50lm/W TYP</b>	<b>G2.10 64.5lm/W TYP, G2.07 60.9lm/W TYP, G2.04 51.9lm/W TYP</b>
Max. Qty of Fixtures Per N3	<b>40</b>	
Max Total Run Length, including cable, Per N3	<b>100ft</b>	
Input voltage	<b>120 VAC 60Hz, 277 VAC 60Hz +/- 10%</b>	
Total Harmonic Distortion (THD)	<b>&lt; 5%</b>	

<sup>1</sup> All performance measurements taken with fixture stabilized at 25°C ambient, 100% power input, unless otherwise stated, within CCT range of 2700 - 5000K.  
<sup>2</sup> Lumen measurement complies with IES LM-79-08 testing procedures.  
<sup>3</sup> Lumen maintenance values calculated in accordance to TM-21 procedures based on LM-80 compliant measurement data.

770-000003-01 r52

Specifications are subject to change without notice



## G2 HIGH OUTPUT LINEAR ACCENT

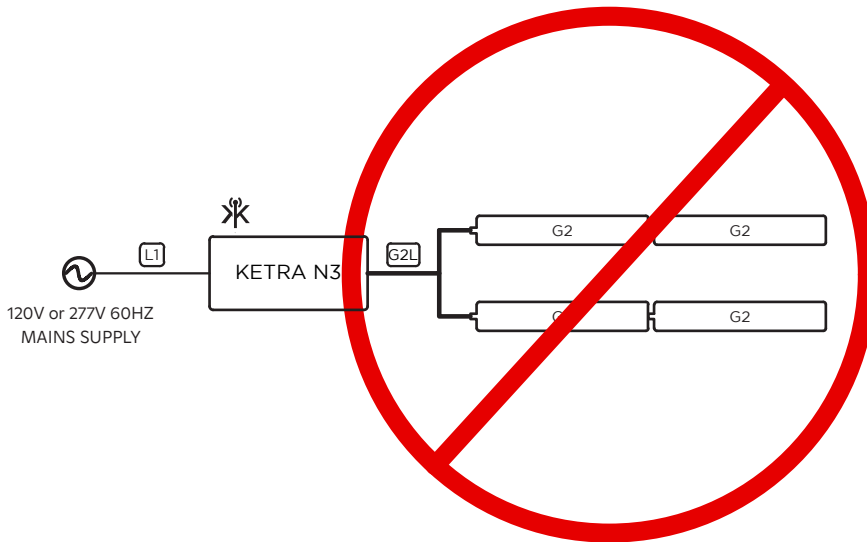
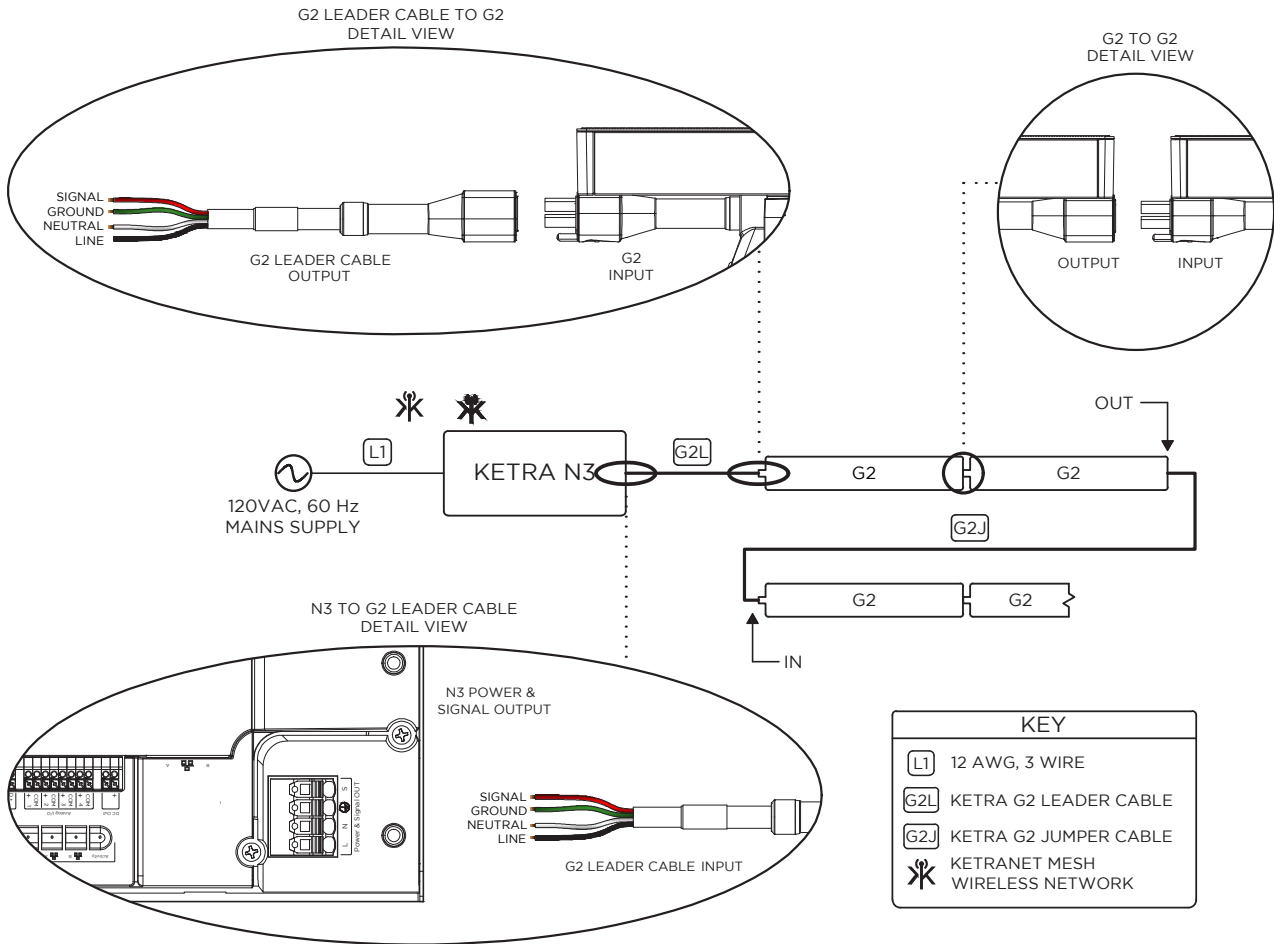
### ACCESSORIES

Leader 50', White (with Terminator)	UN-G2L6001CWH
Leader 50', Black (with Terminator)	UN-G2L6001CBK
Leader 10', White (with Terminator)	UN-G2L1201CWH
Leader 10', Black (with Terminator)	UN-G2L1201CBK
Lead Out 10', White	UN-G2LO1201CWH
Lead Out 10', Black	UN-G2LO1201CBK
Jumper 1', White	UN-G2J0121CWH
Jumper 1', Black	UN-G2J0121CBK
Jumper 5', White	UN-G2J0601CWH
Jumper 5', Black	UN-G2J0601CBK
Jumper 10', White	UN-G2J1201CWH
Jumper 10', Black	UN-G2J1201CBK
Jumper 25', White	UN-G2J3001CWH
Jumper 25', Black	UN-G2J3001CBK
Terminator (Optional Replacement)	UN-G2TC
G2 Hex Louver, 45°, White (NFL, FL, WFL)	UN-G212HLST45WH
G2 Hex Louver, 45°, Black (NFL, FL, WFL)	UN-G212HLST45BK
G2 Hex Louver 45°, White (GRAZE)	UN-G212HLGR45WH
G2 Hex Louver 45°, Black (GRAZE)	UN-G212HLGR45BK
G2 Hex Louver 65°, White (NFL, FL, WFL)	UN-G212HLST65WH
G2 Hex Louver 65°, Black (NFL, FL, WFL)	UN-G212HLST65BK
G2 Hex Louver 65°, White (GRAZE)	UN-G212HLGR65WH
G2 Hex Louver 65°, Black (GRAZE)	UN-G212HLGR65BK
G2 Alignment Track	UN-G2TRKZP48
N3 Satellite, Recessed Rated Housing, Commercial	CM-N3IND16RECBK
N3 Satellite, Recessed Rated Housing, Residential (HomeWorks)	HW-N3IND16RECBK
N3 Satellite, Plenum Rated Housing, Commercial	CM-N3IND16PLEBK
N3 Satellite, Plenum Rated Housing, Residential (HomeWorks)	HW-N3IND16PLEBK



# G2 HIGH OUTPUT LINEAR ACCENT

## EXAMPLE WIRING DIAGRAM



STAR TOPOLOGIES ARE NOT SUPPORTED



## G2 HIGH OUTPUT LINEAR ACCENT

### DIAGNOSTIC REPORTING

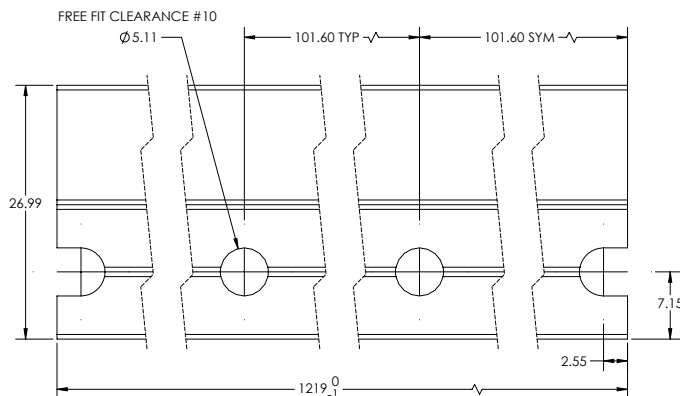
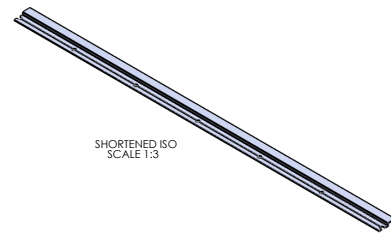
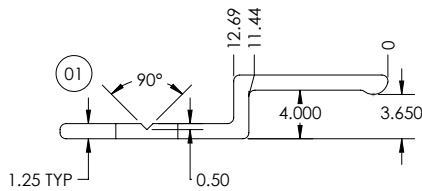
Prior to commissioning in Design Studio, Ketra's G2 Linear should power on to a default white state. If it powers on to some other color, that means there is a problem in the installation conditions. See the table below for each color's meaning.

Color	Condition	Correction
Red	Low input voltage on the power line	Ensure that the input voltage is 120V or 277V, + or - 10%
Magenta	Signaling wire connection not detected	Cut power and reconnect the red conductor of the leader cable to the N3's "S" port
Red-Green-Blue Pattern	Fair wireless connectivity	Ensure that the D3 is not in a metal enclosure and that there are no significant obstructions between the D3 and other Ketra devices.
Red-Green Pattern*	Line and neutral wiring switched	Cut power, and reverse line and neutral wiring
Yellow	Multiple runs of G2 detected	Cut power and disconnect all but one run of G2. Only one run can be connected to a satellite
Turquoise	More than 40 G2 detected	Remove the turquoise linears and reboot the satellite
Green	More than 100ft run length detected	Remove excess cabling and/or fixtures, and reboot the satellite
Dark Blue	(including cables and fixtures)	

\* for product ordered in 2019

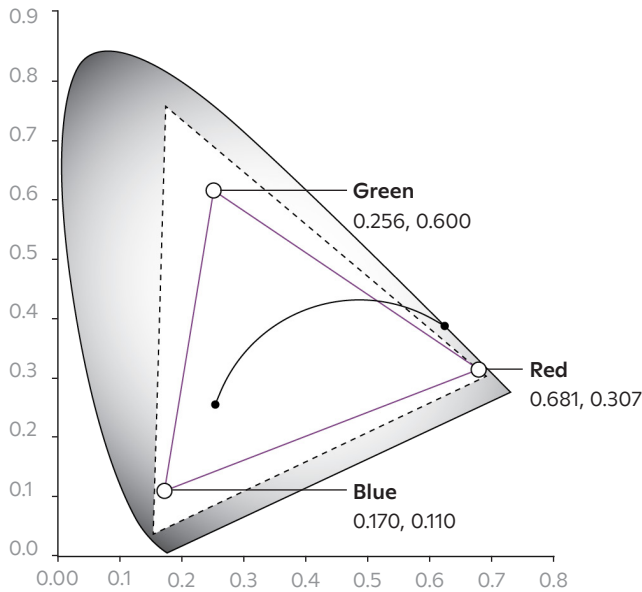
### G2 ALIGNMENT TRACK - G2TRKZP48

**Note:** All alignment track measurements are shown in mm.



770-000003-01 r52

Specifications are subject to change without notice

**WIDE GAMUT**
**CIE 1931 Color Chart**


Ketra's G2 Linear Accent can easily be configured via Ketra's intuitive Design Studio software. The product can reproduce any color point within the triangle shaped gamut indicated in the chart to the left. With Ketra's innovative optical and thermal feedback system, the color point is maintained to an accuracy of <1 MacAdam ellipse over the lifetime of the product and across operating temperature range.

— **Calibrated Gamut:** Color point is maintained to an accuracy of <1 MacAdam ellipse over the lifetime of the product and across operating temperature range .

- - - **Expanded Gamut:** Color calibration is relaxed such that each product produces the most saturated color it is capable of.

**General Specifications**

LED linear shall employ closed loop optical and thermal feedback capable of maintaining color point accuracy of <1 MacAdam ellipse.

LED linear shall have color spatial uniformity of <2 MacAdam ellipses over full field angle.

LED linear shall be capable of a CRI >90 at any point along the Black Body Curve from 2700 - 5000K.

LED linear shall be a single source multi-die emitter.

LED linear shall be sealed, meeting UL damp location and IP20 requirements.

LED linear shall be dimmable to 0.1% of measured luminous flux with digital dimming.

LED linear shall be UL listed and RoHS compliant.

LED linear shall be capable of in situ firmware and software upgrades.

LED linear shall be # \_\_\_\_\_