

S30 Downlight Trim

PRODUCT DESCRIPTION

The S30 Downlight Trim is designed with a 4 in (101.6 mm) aperture that can be used with a 5 in (127 mm) new construction recessed housing to integrate the Ketra PAR 30 long neck lamps into new construction projects

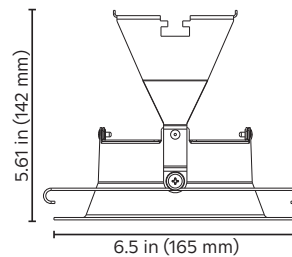
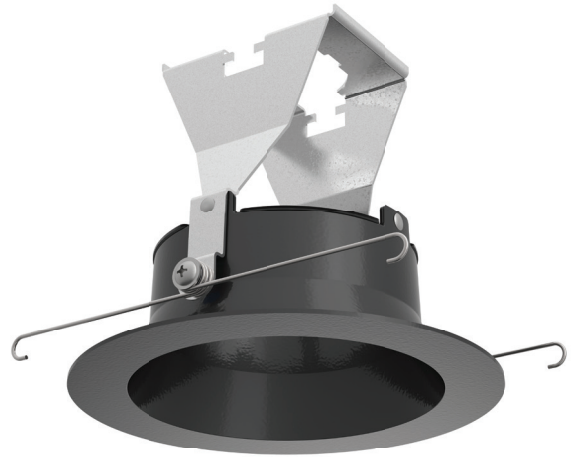
Only compatible with the 800 lumen option of the Ketra PAR 30 lamp.

ACCESSORIES

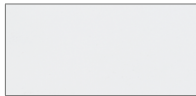
HALO E5ICAT (5 in [127 mm] ICAT, E26)

ELCO LUT-EL5ICA-G24 (5 in [127 mm] ICAT, GU24)

Note: HALO E5ICAT is not Title 24 Compliant



Finish



White



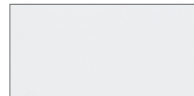
Black



Silver



Bronze



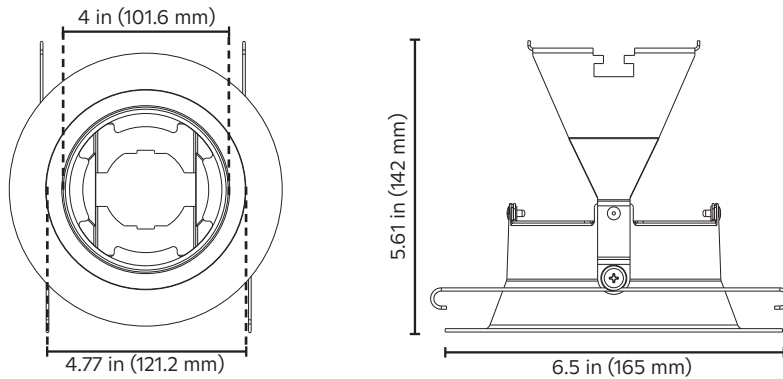
Paintable White

Note: For information on the S30 lamp, refer to the S30 Lamp Specification Sheet P/N 3662383 at www.ketra.com.

SPECIFICATIONS

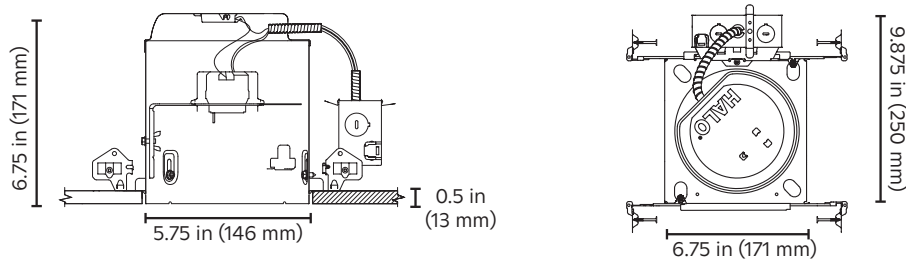
Trim Mechanical

Weight	0.55 lbs (250 g)
Materials	Trim - Cast Aluminum, Powder Coated or Painted Bracket - Corrosion Protected Steel



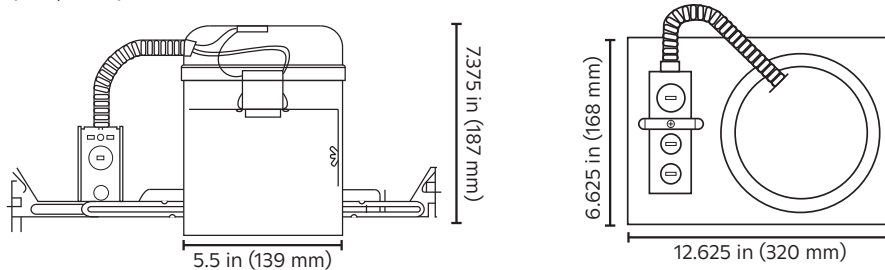
Accessories

HALO 5 in (127 mm) New Construction Recessed Housing (ICAT, E26)	Not available through Lutron. Purchase online or at your local hardware store.
--	---



The E5ICAT housing adjusts in plaster frame to accommodate ceiling thicknesses from 0.375 in to 1 in (9.5 mm to 25.4 mm). Find more details on the HALO Housing, see the spec sheet on Cooper Lighting's website.

ELCO 5 in (127 mm) New Construction Recessed Housing (ICAT, GU24)	Available through Lutron or ELCO. Order code: LUT-EL5ICA-G24
---	---



The ELCO 5 in (127 mm) housing adjusts in its frame to accommodate up to 1.25 in (31.75 mm) ceiling thickness. It contains a GU24 socket in accordance with Title 24. For more details, refer to the spec sheet on ELCO Lighting's website.

LAMP ORDERING GUIDE (TRIM COMPATIBLE)

This guide provides a subset of options compatible with the S30 Downlight Trim.
For full specifications including explanation of options, performance characteristics, and operating requirements, please see the S30 Lamp Specification Sheet P/N 3662383.

Please download this PDF to use the interactive drop down features of the ordering guide.

	S30		GT		11		
Product Line	Model	Lumens	System	Beam Angle	Region/Voltage	Base	Lamp Housing Color

Order code: _____

Product Line	Code	System	Code	Base	Code
Commercial (Athena compatible)	CM-	CCX ⁴	GT	E26	E26
Residential (HomeWorks compatible)	HW-	Beam Angle		GU24	G24
Model		Flood (15°)	SP	Lamp Housing Color	
		Flood (25°)	FL	White	WH
S-Series PAR30 Long Neck LED S30 Lamp	S30	Wide Flood (40°)	WFL	Black	BK
Lumens		Very Wide Flood (60°)	VFL		
		Extra Wide Flood (90° BR Style) ⁵	XFL		
800 ¹	08	Region / Voltage			
800 High-Efficacy ^{2,3,4}	08H	North America, 120 V~ 60 Hz	11		

FINISH ORDERING GUIDE

Trim Color

Order code: _____

Finish Color	Code
White	PWH
Black	PBK
Silver	PSR
Bronze	PBZ
Paintable White	CWH

¹ This option is not available for sale in California.

² High-efficacy light sources are California Title 20 and Title 24 JA8 complaint.

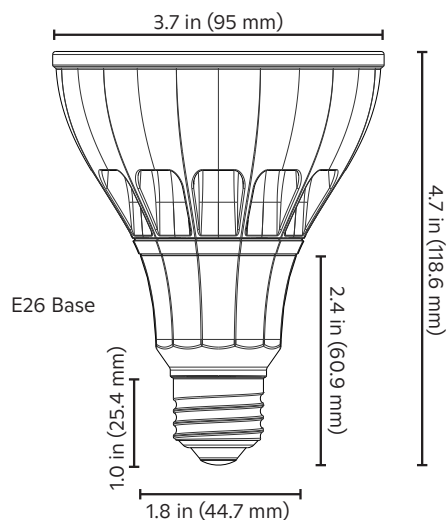
³ High-efficacy only available for design with Clear Connect-Type X systems.

⁴ CCX stands for Clear Connect-Type X.

⁵ Extra Wide Flood beam angle is not available in the high-efficacy lumen options.

PRODUCT DIMENSIONS

Ketra S30 Lamp



TRIM COLORS



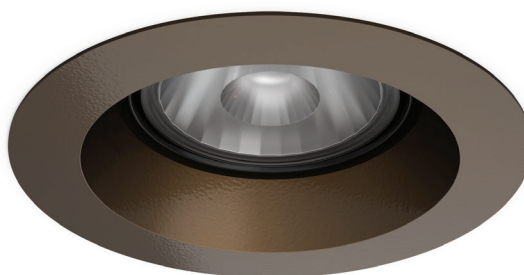
White/Paintable White



Black



Silver



Bronze

DESIGN COMPONENTS

